

# *LIGHT UP THE FUTURE*



CHILD DEVELOPMENT  
INSTITUTE



2024-2025  
ANNUAL REPORT





## CDI Main Office & ELC Reseda

18050 Vanowen St.  
Reseda, CA 91335  
818-888-4559

## CDI ELC Canoga Park

7260 Owensmouth Ave.  
Canoga Park, CA 91303  
818-888-4559

## CDI Tarzana Campus

18411 Clark St. #100  
Tarzana, CA 91356  
818-888-4559

[www.cdikids.org](http://www.cdikids.org)



[child.development.institute](http://child.development.institute)



[YouTube CDIkids](https://www.youtube.com/cdikids)

CDI's mission is to help all children reach their full potential by supporting the relationships and environments that shape early development.

## FROM THE PRESIDENT/CEO

---

Over the past year, we have witnessed amazing strength in our families, staff, board, and community partners as we navigated a new set of challenges. Changes in federal funding for programs that many families depend on have created additional stress and uncertainty. Immigration enforcement activities have heightened anxiety throughout our community, creating an atmosphere of fear that affects families' daily lives and their children's well-being. When young children don't receive the support they need, the entire community feels the impact.

Despite these significant obstacles, we continue to RISE and SHINE. We are working together, listening deeply to each family's needs, and creating innovative solutions even in the face of resource constraints. The upcoming year will likely bring continued uncertainty and policy changes that affect our community. I am confident that we will continue to navigate these challenges with the same creative determination we have shown in the past, while maintaining our focus on young children and their families.

Our commitment remains clear: to create safe spaces where families can grow and thrive together, building strength through community connection. The year has reinforced our belief that when we stand together and support one another, we emerge stronger and more resilient.

We share our gratitude for the community of caring individuals who continue to keep the light shining for children and families, even when the path forward seems uncertain. We are building resilience together during these challenging times.

With hope for the future,



**Tessa Graham, MS, LMFT, BCBA**  
President/CEO  
Child Development Institute







# Early Learning Centers

Located in Reseda and Canoga Park, CDI Early Learning Centers offer free play and learning spaces open to all children ages 0-6 and their families with activities promoting healthy development, free developmental screenings, and connections to community resources. ELCs provide high-quality child development programming while creating supportive communities for parents struggling with isolation and stress.



Seasonal Events & Activities

Back to School Event



LA Opera "Bambino"

**14,902 +**  
child and family visits  
annually at ELCs





# Developmental Screenings That Change Trajectories



## Free Developmental Screenings at CDI ELCs

The imperative to track healthy development is not just a test, it's a lifeline. While the American Academy of Pediatrics recommends annual developmental screenings for children under the age of 3, the reality is sobering: **only 30% of California's babies and toddlers** receive these critical screenings according to the Zero to Three State of Babies Yearbook.

At CDI, we're changing that narrative—one child, one family at a time. CDI's specially trained screeners **provide hundreds of screenings each year** for children 5 and under, offering more than just assessment—we provide warm referrals that ensure families get the help they need right away. This comprehensive approach is changing the trajectory for these children and their families, creating ripple effects that extend far beyond the screening room.

**71% of screenings** resulted in referrals for additional services, a significant increase from the 50% we saw before COVID-19. This rise reflects both an increased need in our community and our enhanced ability to identify children who can benefit from early intervention. Through our developmental screenings, we're not just tracking milestones, we're illuminating possibilities and changing life trajectories, one child at a time.



*"CDI's developmental screenings and early intervention services not only changed my son's life trajectory, but also our whole family's trajectory. I can't imagine what our life would be like now without the help we got from CDI." — CDI Parent*

## Developmental Screening Certificate Program

CDI's comprehensive training prepares individuals and organizations working with infants and young children to deliver developmental screenings. The training uses a developmental systems model and includes research-informed and practical information, reflective practice, and hands-on experience.



[Visit our website to learn more.](#)



# Hearts That Shine

Last year, over **265 volunteers** gave their time to make a difference every day for thousands of children and their families. CDI would not be able to operate its Early Learning Centers without the dedication of community volunteers and service-learning students.



## 15,788 hours

were contributed by ELC volunteers in  
2024-25



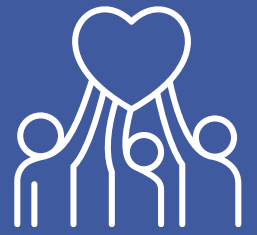
Ambassador Volunteers: Ron Roscoe, Betsie Warren, Marty Fisher & Christina Goschin



[Visit our website to learn more about volunteering!](#)



# Strength in Unity: Community in Action



"We are deeply grateful to our incredible community partners whose support allowed us to provide essential resources to families — including food, school supplies, diapers, toys, and vital referrals for housing, education, and healthcare.

Our Early Learning Centers continue to thrive as welcoming spaces where families and children engage in free, enriching programs to build and sustain healthy parent-child relationships. Together, we're building a stronger future and staying true to our mission: helping every family reach their full potential."

**Dana Kalek, EdD**  
**Director of Operations**



**100+  
Community  
Partners**





# Community of Care

Rise & Shine

Our community gathered together at CDI's annual Summer Soirée, where hearts connected and hope illuminated our shared vision for the exciting new CDI Arts Pavilion!

The Arts Pavilion will be a transformative space where children will dance, draw, drum, and perform, where families will connect through creativity and play.

We're weaving a safety net of science, compassion, and human connection that builds the foundation for resilient families and a stronger community where every child belongs, is seen, and has their voice heard.



*Protecting childhood isn't about shielding kids from the world—  
it's about building a world that's worthy of them.*



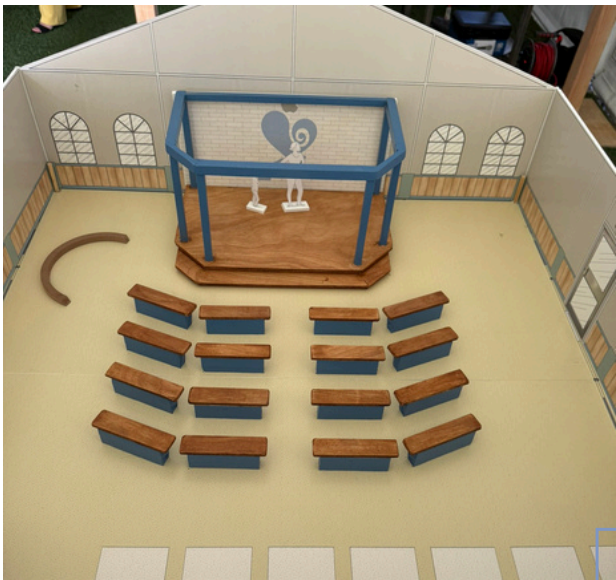
Community members listening to Joan Maltese's presentation



Tessa Graham, Councilmember Nithya Raman, Joan Maltese



Laura Counts, Tessa Graham, Dana Kalek, Joan Maltese



Future CDI Art Pavilion Model



## Make Magic Possible at the New CDI Arts Pavilion

Every child deserves a space to dream, create, and flourish. The CDI Arts Pavilion will be that special place—a vibrant creative hub in the heart of Reseda where young minds can discover the transformative power of the arts and foster lifelong learning.

### THE NEED

Many children in our community, especially those from underserved neighborhoods, lack access to quality arts education and creative spaces. The CDI Arts Pavilion will change that by providing a dedicated environment where creativity and learning intersect.

### THE VISION

CDI is creating something revolutionary: a dedicated Arts Pavilion designed as a kaleidoscope of creative possibility where all children, regardless of ability or life circumstances, are welcome.

- Welcome thousands of local children annually
- Offer hands-on activities in art, music, and creative play
- Provide state-of-the-art facilities and programs
- Create a nurturing environment for artistic exploration

### YOUR IMPACT

By supporting the CDI Arts Pavilion, you're not just helping build a facility—you're investing in our community's future. Every dollar contributes to creating a space where children can discover their talents, build confidence, and develop skills that will serve them throughout their lives.



### Impact of Art & Music Programs for Young Children

- Reduces educational gaps and creates opportunities for all kids
- Builds a more creative and innovative workforce
- Creates well-rounded individuals ready for future challenges
- Boosts critical thinking and creative problem solving
- Improves concentration
- Increases self-esteem
- Reduces stress

**Help us build this haven of hope and creativity for our community's children.**

*Just*  
**Imagine**





# Comprehensive Therapeutic Services



*“Wonderfully supportive experience for me and my daughter - Our therapist helped me to navigate services for her and made a very positive difference to my daughter in therapy.”*

*~ CDI Parent*



# 97%

of families report that CDI made a positive difference in their child's development

## Multidisciplinary Services



Developmental Assessments



Child & Family Therapy



Speech Therapy



Physical Therapy



Occupational Therapy &  
Sensory Integration



Feeding Therapy



Social Skills Groups



Parent/Caregiver  
Support Groups

CDI provided over **27,000 hours** of high-quality, relationship-based early intervention and therapeutic services **to 589 children** and families last year.



# Parent/Caregiver Support Groups



CDI's parent support groups complement our children's social skills programs by creating a dedicated space for caregivers during their child's therapeutic journey. Our family-centered approach values parents as partners in their child's development while providing access to professional guidance from mental health professionals and child development experts.

These groups serve families navigating various developmental challenges, offering structured support alongside our children's programming. Parents benefit from professional facilitation and the opportunity to connect with other families, building community relationships that extend beyond the group sessions. This integrated model ensures comprehensive support for the entire family unit as children work on social and developmental skills.

*"The CDI Parent Support Group gave me a safe and welcoming place when I didn't have anywhere else to turn as I navigated Early Start services. It allowed me to connect with other parents and caregivers in a supportive environment, and the staff were truly caring and encouraging. Being part of this group helped me build the confidence to pursue my work as a parent advocate for children with developmental disabilities."*

**- Blanca Chavez, Ed.D.**

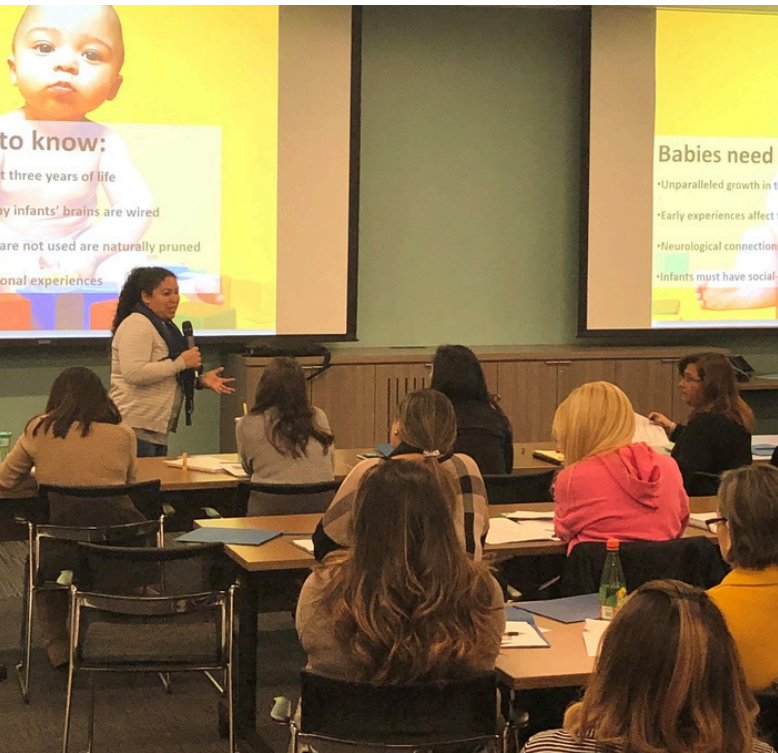


*"I want to express my appreciation for holding a safe space for parents/caregivers. For many of us, the Parent Group is the only opportunity to decompress and share our experiences with other parents in a safe environment. The group facilitators have also fostered a professional and caring environment."*

**~ CDI Parent**



# Professional Development That Makes a Difference



As a leading resource on early child development, CDI's professional training empowers communities to be mindful of children and their healthy development. We provide interactive training and consultations to organizations, professionals, and schools serving young children throughout Los Angeles County.

This year, CDI launched online parenting series offering accessible information, support, and interactive sessions with professionals. These programs address individual family concerns and are inclusive of parents and caregivers of children with special needs, strengthening our community's capacity to nurture healthy child development.

## CDI delivered direct trainings for **3,500** professionals and parents/caregivers last year.

### Training Partnerships

- Bright Horizons – Disney Children's Center
- Bright Horizons – Fox
- Bright Horizons – Warner Brothers
- Child Care Alliance LA
- Child Care Resource Center/Head Start
- Child's World
- Huntington Park-Parks and Recreation
- Kidspace Museum
- Options for Learning
- Granada Hills Charter Schools
- Temple Judea
- Saint James Health
- Saint Johns Community Health
- Saint Mel's Preschool





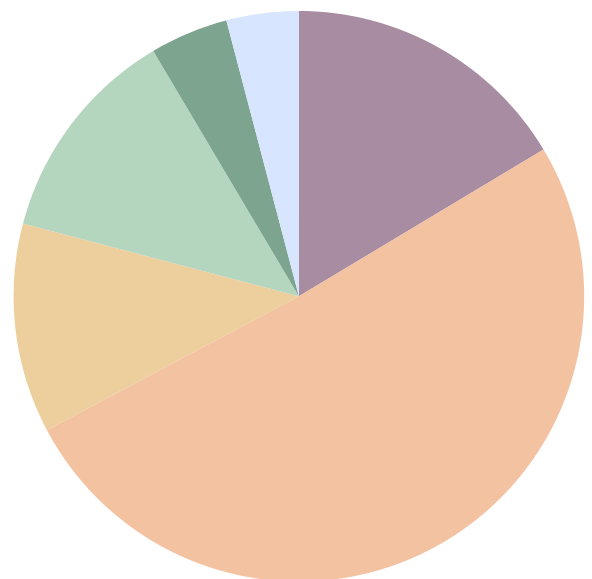
# Financial Summary

	2024-25	2023-24
<b>Net Assets</b>	<b>\$5,369,929</b>	<b>\$5,331,203 *</b>
Revenue and Other Supports		
Programs and Services	\$3,082,360	\$2,706,553
Grants/Fundraising	\$604,669	\$590,981
Other Income	\$44,611	\$43,367
<b>Total Revenues</b>	<b>\$3,731,640</b>	<b>\$3,340,902</b>
<b>Expenses</b>		
Programs and Services	\$3,070,335	\$3,358,795
Management and Administration	\$450,380	\$472,220
Grants/Fundraising	\$172,199	\$183,529
<b>Total Expenses</b>	<b>\$3,692,914</b>	<b>\$4,014,544</b>
<b>Total increase in net assets</b>	\$38,726	(\$673,642)
<b>Net assets, beginning of year</b>	\$5,331,203	\$6,004,846
<b>Net assets, end of year</b>	\$5,369,929	\$5,331,203

\*includes sale of Canoga Park parking lot and reinvestment in Reseda property in FY 2022/23

## 2024-25 Funding Sources

Grants/Fundraising	\$604,669
IDP - Regional Center	\$1,874,027
Insurance/Private Pay	\$437,958
AS - Regional Center	\$456,073
LAUSD	\$163,471
Training Program	\$150,867



*"In the face of ongoing economic and political uncertainty, CDI's leadership continues to demonstrate its agility, adaptability and dedication as it serves the community. Through a focused strategic planning effort among its leadership and the Board of Directors, CDI posted impressive results for Fiscal 2025, growing its Program and Services revenue by ~14% year-over-year, while reducing expenses by ~9% over the same period. The results help CDI stay on firm financial footing while it pursues its mission to help each child reach their full potential."*

~ Robert Kahn, CDI Board Treasurer



# Donors

Our donors are vital to the success of CDI. This support allows us to be able to provide critical services for children and their families making a positive impact on their lives

## GOLD

The Ahmanson Foundation  
The Andersen Foundation  
The Annenberg Foundation  
The Green Foundation  
The Mark Hughes Foundation  
Steven & Christine Molaro  
UniHealth Foundation  
Windsong Trust Foundation

## SILVER

Lindsey Horvath -LA County  
Supervisor, 3rd District  
Baptist Service Corp.

## PATRON

Auto Club Enterprises  
CVS Health  
Howard & Stephanie Sherwood  
Lanning Melville  
Providence Health & Services  
Foundation Mother Joseph Fund

## CHAMPION

Sean & Leslie Africa  
Paola Aguilar  
Russ & Shereen Allison  
Lee & Arlene Alpert  
Victoria Armenta  
Ariel Bahner  
Diane Bailey  
Roberto & Silvia Barragan  
Alison Baugh  
Michal Ben-Yona  
Stephanie Bernabe  
Sandra Burns  
Giannina Cardentti  
Naydine Carrillo  
Maria Castaneda  
Laura Counts  
Phung Dao  
Susan Du Brin  
Shadi Farmani  
Demis Flores  
Timothy Gaspar  
Gelb Group – A Family of Companies  
Foroogh Ghadiani  
Tessa & Francis Graham  
Rick Groves  
Gary Groves  
Christine Guieb  
Marlene Harrison

## CHAMPION

Sonja Inglin  
Agnieszka Kacicki  
Robert Kahn  
Dana Kalek  
Hema Kapil  
Vahid Khorsand  
Leon & Lynn Kosdon  
Mark Levinson Esq.  
Julie Leyba  
Gregory Lippe  
Joan & Dan Maltese  
Charles & Susan Maltese  
Waltona Manion  
Mark Mayer  
Evelyn McInnes  
Amy Millan  
Maxine Miller  
Robert Mischel  
Walt W. Mosher, Jr. Foundation  
Susan Ng & Ben Fong  
Nicole Orsini  
Providence Health and Services  
Jose Ramos  
Jackie Ramuno  
Daniela Rechtszajd  
Dr. Howie Reinstein  
Barney Reitner  
Brittney Richards  
Ronald Roscoe  
Brad Rosenheim  
Miri Rossitto  
Dorothy Royce  
Fredy Ruiz  
Michael Schindler  
Tony Silbert  
Eric Sornborger  
Jerilyn Stapleton  
Madeline & Gerry Staub  
Nina Tabakh  
Marian Welch  
Ronnie Willett  
Wurwand Foundation  
Akiko Yasuike  
Barbara Zelinski



## FRIEND

AAA-Community Impact  
Rushlan Yasmin Alexander  
Gabriella Arguello  
Armanino LLP  
Karen Avagian  
Baby2Baby  
CalFresh, The Institute for  
Community Health & Wellbeing  
Councilmember Blumenfield  
Meredith Buchanan  
Victoria Camacho  
Aaron Clevenger  
Hemang Dhaulakhandi  
Anita Espinoza  
Food Forward- CSUN  
First Bank  
Assemblymember Jesse Gabriel  
Faith Golden  
Gary Grabel  
Rico Gross  
Meha Gupta  
Milda Harris  
Joseph Imaromna  
Hema Kapil  
Sheri Khodadadi  
Mona Kurra  
LA Kids Consignment  
LAPD Topanga Station  
LA Fire Department  
Yoojin Lee  
Senator Menjivar  
Michelle Miranda  
Mottaghia  
MTO Shahmaghsoudi  
ONEgeneration  
Anahi Padilla  
Sruti Panchapakesan  
Dianne Philibosian  
Marjan Sadafi  
Melissa Saint Louis-Burton  
Michelle Santos  
The Sweet Spot Workshops  
Ryan Villapania  
Ruth Wentz  
Vallarta Supermarkets

Platinum  
Transparency  
2025

Candid.



# Board of Directors



Sue Du Brin & Susan Ng @  
CDI's Holiday Giving Event

Despite challenges from wildfires, budget constraints, and community changes, CDI continues delivering exceptional services to San Fernando Valley children and families through our therapeutic, developmental, and educational programs across Tarzana, Canoga Park, and Reseda. Our dedicated staff and Board remain committed to advancing CDI's mission as the premier resource for comprehensive, high-quality services tailored to local families' unique needs. We've made significant progress developing our Arts Pavilion and establishing meaningful partnerships with arts organizations and community leaders, bringing rich cultural experiences to our community.

CDI remains a cornerstone of strength and hope for the San Fernando Valley, committed to nurturing every child's potential and supporting families as they build brighter futures together.

**Susan Du Brin**  
Board Chair

A handwritten signature in blue ink that reads "Susan Du Brin".

**Tessa Graham, MS, LMFT, BCBA**  
President/CEO, CDI

**Shereen Allison, PhD**  
CSUN Faculty, School Psychology

**Howard Reinstein, MD**  
Pediatrician

**Susan Du Brin, Chair**  
Community Volunteer

**Vahid Khorsand**  
Deputy Mayor, LA Mayor Karen Bass

**Miri Rossitto**  
Founder/CEO, COWE Communications

**Roberto Barragan, Vice Chair**  
Executive Director, ICON CDC

**Mark L. Levinson, Esq.**  
Attorney at Law

**Fredy Ruiz, MA**  
Immigrant Relations Coordinator, LACOE

**Robert Kahn, Treasurer**  
EVP, Chief Strategy Officer - HTLF

**Christine Molaro**  
Client Family Member, CDI

**Akiko Yasuike, PhD**  
Cal Lutheran Faculty & Chair of Sociology

**Arlene S. Alpert, Secretary**  
Community Volunteer

**Susan Ng**  
Community Volunteer







# CHILD DEVELOPMENT INSTITUTE

[www.cdikids.org](http://www.cdikids.org)



[child.development.institute](https://www.instagram.com/child.development.institute)



[childdevelopmentinstitute](https://www.facebook.com/childdevelopmentinstitute)



**YouTube**

[CDIkids](https://www.youtube.com/CDIkids)